



SAFETY FIRST

Dedication to safety  
Promise for happiness

**SAFETY FIRST**  
Korea Occupational Safety & Health Agency



KOSHA



Korea's leader  
in occupational accident  
prevention

**KOSHA**

## 04 · Road to Respect

To build a happy place for everyone

CEO Message

Mission & Vision

History

## 12 · Road to Safety

To make Korea safer

Key Projects

## 34 · Road to the Top

To pioneer the future  
with the best experts

OSHRI | OSHTI

OSHCI | OSHFI

## 40 · Appendix

## 18 · Road to Togetherness

To work with the field to foster the safety culture

Safety and Health-related Technical/Financial Support

Safety and Health Education | Media Content Development

Safety Culture Promotion | International Cooperation

Digital Strategy | Social Responsibility Management





# Road to Respect

The safety and health of the people and workers is our top priority.



Road to  
Respect

## We will not forget the pains of victims and their families, and keep our feet on the ground.

Korea Occupational Safety and Health Agency (KOSHA) was founded with the goal of ensuring the safety and health of all workers, encouraging employers to spare no effort in accident prevention, and thereby contributing to the growth of the national economy. To that end, we have carried out numerous programs to research, develop, and disseminate preventive technologies, provide technical guidance and education/training on occupational safety and health, conduct safety and health inspections, and otherwise prevent occupational accidents.

KOSHA is the frontline organization for keeping workers safe and healthy, and the single largest public body dedicated to occupational accident prevention. We are fully aware of the gravity of the duty given to us by the nation and its people. Over the last few years, Korean society experienced immense difficulty in reducing deaths from occupational accidents to those of advanced countries.

Finally, through the enactment of the Serious Accidents Punishment Act, Korea reached a consensus to drastically reduce occupational accidents. It means that today, the safety of employers cannot be secured without keeping the workers and their families safe. However, we do not content ourselves that the Act offers full protection for workers' life and health. Korea can cross the threshold and become a leader in occupational accident prevention only when all citizens take interest in occupational accidents, and businesses fundamentally transform their attitude toward safety and health issues.

The right to life and safety is one of the highest values to be upheld for all of humanity regardless of gender, wealth, occupation, and nationality. Workers constitute the very bedrock that supports the future and survival of the nation. Without workers' safety, there will be no work or production. We at KOSHA will pay more attention to workers left outside the purview of occupational accident prevention, including those at micro-businesses and small and medium-sized enterprises, foreign workers, and day laborers.

We will use all available tools and spare no effort if it means we can save the life of even a single worker. All KOSHA executives and employees will work as one. We will build a close-knit network and facilitate communication with related ministries, the National Assembly, the press, civil society groups, labor organizations, and occupational safety and health expert so that Korea can become a leader in accident prevention by 2025. We will engrave the sufferings of victims and their families deep in our hearts, and always keep our feet on the ground.

2022.

**Jong Ju Ahn**

President

Korea Occupational Safety and Health Agency




## Mission & Vision

KOSHA has focused all its resources on protecting the life and safety of workers in various workplaces.

We will fulfill our responsibility to create a fair society where all working people can enjoy the right to be safe and healthy without discrimination.

We will pave the way for a country whose workplace is safe and whose people are happy.

### Mission

We are to realize social values of safety and health to ensure everyone's life with **a sense of relief**.

We fuel **fair economy and active administrative works** while widely opening up eyes and ears to safety and health issues at all workplaces.

We place the highest priority on **the value of inclusiveness** for those who are vulnerable to safety and health, incapable of even asking for help despite being in desperate need of help.

We provide **innovative safety and health services** by acquiring the latest technology and knowledge to maintain the expertise at the highest level at all times.

### Vision

**In Korea where all working people enjoy their right to be safe and healthy whenever, wherever**

### Core Values



### Objectives

#### Become a safety leader

- Fatal accident per 10,000 workers:  
0.27‰ in 2022 → 0.23‰ in 2026

#### Establish an ESG management system

- Achieve Greenhouse Gas (GHG) reduction targets  
- Create jobs (38,000) and achieve 'Excellent' satisfaction ratings  
- Rank 'Top (1<sup>st</sup>)' in transparency & anti-corruption

#### Lead Korean Safety New Deal

- Foster new and safer workplaces  
- Build a new digital platform for occupational accident prevention

### Strategic Goals

**Build a safe society for the people**

**Spread public values that affect the people**

**Enhance the occupational safety network that resonates with the people**

**Develop innovative occupational accident prevention services tailored to the people**



Reduction in fatal accident per 10,000 workers

●●●●●● 0.27‰ in 2022  
●●●●● 0.23‰ in 2026



Job creation for **38** thousand workers

'Excellent' rating in mutual growth & satisfaction  
'Top' in transparency & anti-corruption



Building digital platform for occupational accident prevention

## 1987-1989

### Taking the first step

#### Period of Foundation

**1987** Established as Korea Industrial Safety Corporation

**1989** Opened the Occupational Safety and Health Research Institute



## 1990-1999

### Setting the direction

#### Period of Takeoff

**1991** Began inspection services for harmful/hazardous machinery/apparatus

**1992** Completed a nationwide signature-collecting campaign with 10 million people for zero occupational accidents

**1993** Held the 1<sup>st</sup> Industrial Safety and Health Awards

**1995** Built Safety and Health Research Center

**1996** Designated and operated Safety Inspection Day

**1997** Built Industrial Chemicals Research Center

**1998** Hosted the 14<sup>th</sup> Annual General Meeting of Asian-Pacific Occupational Safety and Health Organization in Seoul

**1995**

0.99%



## 2000-2009

### Taking a step further

#### Period of Advancement, Growth, and Development

**2001** Launched the project to Creating Clean Workplace Support

**2004** Built Chemicals Safety and Health Center

**2007** The 20<sup>th</sup> anniversary ceremony

**2008** Hosted the 18<sup>th</sup> World Congress on Safety and Health at Work where the Seoul Declaration was adopted

**2009** Renamed Korea Occupational Safety and Health Agency (Adoption of the acronym of the agency name 'KOSHA')

**2010**

0.69%



## 2010-2022

### Paving a new way

#### Period of Second Takeoff

**2010** Organized Service Industry Department

**2014** Moved KOSHA headquarters to Ulsan

**2015** Obtained A grade from Customer Satisfaction Survey on Public Institutions

**2016** Opened Central Training Center of OSHTI

**2017** Opened Occupational Safety and Health Certification Institute, OSHCI; Established the Central Accident Investigation Team

**2020** Opened Occupational Safety and Health Future Technology Institute, OSHFI

**2021** Opened new KOSHA Area Offices in East Seoul, Goyang-Paju, and North Chungcheongbuk-do

**2020**

0.57%

—○— accident rate %

### History

## The path we have taken to protect the safety and health of working people

Korea's history of safety and health has evolved with the history of KOSHA.

Since its foundation, KOSHA has taken only the path towards workers' safety and health in order to lay the foundation for safety and health and become the most professional institution in occupational accident prevention.

# Road to Safety



KOSHA will spare no effort in protecting workers' life and safety.



## Key Projects

KOSHA carries out various occupational accident prevention projects, especially for the workplaces with frequent accidents to reduce the number of fatal accidents.

### Focusing on the industry types with frequent fatal accidents

#### Construction-Falls

On-site patrol check for preventing falls-oriented fatalities in the construction industry

#### Manufacturing-Caught in/between

On-site patrol check for preventing caught-in/between fatalities in the manufacturing industry

### Safety and Health-related Technical Support

#### Intensive management on high-risk workplaces/facilities and projects to improve work environment for workers' health protection

- Intensive management on occupational accident
- Intensive management on chemical accidents
- Construction of self-regulated safety and health management system
- Improvement of hazardous work environment
- Workers' health protection

### Safety and Health-related Financial Support

#### Financial aid to build safe and pleasant work environment and workers' health protection

- Improvement of facilities with hazardous risk factors
- Safety investment innovation initiative
- Loan assistance to equip occupational accident prevention facilities







## To enhance on-site response capabilities for safety and health

People's life and safety are the highest values that cannot be replaced by any other and must be protected at all costs. However, the repeated and conventional occupational accidents and fatalities are proof that we still have a long way to cover.

More than half of all fatal accidents take place in construction sites. To reduce fatal accidents, KOSHA will focus its capabilities on ensuring that its **'Three Safety Measures'** are implemented across all sites: **Safety measure for fall accidents, Safety measure for caught-in/between accidents, and Use of personal protective equipment (PPE).**

KOSHA will keep our eyes and ears open to identify and actively address safety and health issues at workplaces, thereby keeping workers safe.



### Fall

We prevent fall accidents at construction sites by encouraging the installation of safety facilities such as work platforms, and reinforcing on-site patrols at hazardous sites.



### Caught-in/between

We prevent caught-in/between accidents by inspecting essential safety measures and management for manufacturing workplaces with hazardous machinery/apparatus and encouraging the businesses to improve their practices.

안전보건공단  
**KOSHA**



# Road to Togetherness

KOSHA will actively address safety and health issues at workplaces by providing technical support tailored to each site and focusing on groups with higher risks of serious and fatal accidents.

Road to Togetherness



## Safety and Health-related Technical Support

KOSHA provides the optimal solution by focusing on high-risk workplaces/facilities and improves work environment in many directions for workers' health.



### Intensive management on occupational accident

KOSHA focuses on intensive management of major high-risk workplaces and facilities where many workplace fatalities occur to find the root cause of serious accidents and provide optimal solutions.

#### Intensive management on high-risk factors of workplace fatalities

We strive to prevent workplace accidents and deaths by performing "On-site Patrol Check" on hazardous machinery/apparatus and sites that resulting in fatal accidents, specifically targeting to prevent 'falls' in the construction industry and 'caught-in/between' in manufacturing industry.

#### Support for investigations into serious accidents

We investigate and identify the root cause through in-depth analysis when a serious accident occurs and encourage improvements in laws and systems to prevent any recurrence of such accidents.

#### Calculation of safety index in construction

We promote accident prevention activities by figuring out accident status of major construction owners, local government agencies or construction companies and identifying their efforts for accident prevention.

#### Evaluation of private accident prevention institutions

We aim to encourage self-regulatory improvements on the level of occupational safety and health (OSH) services delivered to workplaces by objectively evaluating the current conditions and competence of work performances from the private accident prevention institutions and differently supervising them according to the level of outcome of the evaluations.

#### Operation of Accident Monitoring & Response Center

We operate the accident monitoring and response center to identify and notify workplace accidents promptly through 24-hour real-time monitoring and respond to accidents immediately for preventing secondary damage.

#### OSH Guardian for high-risk industries

We enhance the safety awareness, consciousness, and activities of business owner by hiring retirees those with wide fiend experience in construction/shipbuilding to patrol the working field.

#### MOU and Civil-Government cooperation

We lead mutual OSH activities by setting up partnership in occupational accident prevention with OSH related agencies through MOUs and systematic management.

※ MOU: Memorandum of Understanding

## Intensive management on chemical accidents

KOSHA preemptively responds to accidents in chemical handling businesses with high-risk of serious industrial accidents such as leakage of toxic substances, fire, explosion, etc.



### Review and confirmation of PSM reports

We review and confirm Process Safety Management (PSM) reports written and submitted by business owners to prevent serious industrial accidents such as leakage of hazardous substances, fire, explosion, etc.

### Chemical accident alerting system

We consult PSM submitting workplaces by gathering and analysing any sign of dangers in advance and then alert their hazard level in three stages to preemptively prevent serious accidents.

### Technical support in fire/explosion prevention for SMEs

We prevent chemical accidents through management consulting or technical support for the small and medium-sized enterprises (SMEs) handling large amount of chemicals or vulnerable to leakage, fire, explosion, etc.

### Hazardous chemical substances handling facilities examination & safety diagnosis

We conduct examination for facility installation, regular/frequent examination or safety diagnosis on facilities handling hazardous and dangerous chemical substances in accordance with the Chemical Substances Control Act.

## Construction of self-regulated safety and health management system

To thoroughly implement the Occupational Safety and Health Act and the government's occupational safety and health policy, KOSHA enhances the execution of occupational accident prevention projects and carry out projects to establish a self-regulated safety and health management system at workplaces.



### Consulting on the safety and health management system

We provide SMEs, having difficulties in setting up/executing a self-regulated safety and health system, with consulting on the key factors for establishing the system.

### Operation of risk assessment consulting and an accreditation system

We provide risk assessment consulting so that employers can identify, evaluate, manage, and improve their workplace's hazardous and dangerous factors on their own and operate the outperforming workplace accreditation system of risk assessment.

### Review and confirmation of hazard prevention plans (Manufacturing, Construction)

We review hazard prevention plans for manufacturing workplaces or construction sites prone to high-risk occupational accidents to review and confirm preliminary safety.

### Safety Management Rating (Safety-Cap) System for public institutes

We encourage public institutes to improve the level of safety and establish a safety culture by evaluating the safety-related capabilities, safety levels, safety performances.

### Safety and health management system consulting for public institutes

To protect safety and health of working people, we provide consulting on setting up/executing a self-regulated safety and health management system for public institutions.

## Improvement of hazardous work environment

KOSHA inspects work environment in order to create safe and pleasant workplace and manage workers' health systematically.



<b>'Health Stepping Stone' for small-sized enterprises</b>	We provide small-sized enterprises with financial support for basic system to prevent work-related diseases such as work environment monitoring, special health examination, etc.
<b>Health support for the vulnerables</b>	We urge intensive prevention care on workers with high risk of musculoskeletal disorders/ cerebra-cardiovascular diseases, and give financial support for their health examination.
<b>Reliability evaluation on working environment monitoring</b>	We evaluate reliability of work environment monitoring system in order to secure adequacy of running the system, to improve hazardous work process, and to enhance the quality of the system.
<b>Notification service on chemical exposure information</b>	We provide a service in order that every worker can check the type of chemicals they handle, and the level of chemical exposure involved in his/her work process.
<b>Safety and health-related technical support for small-sized enterprises</b> <small>(in cooperation with private institutions)</small>	We provide technical support in collaboration with private accident prevention institutions for those facing lack of safety and health management such as workplaces with 49 full-time workers or less or construction projects whose cost is lower than KRW 100 million (about USD 83,000).

## Workers' health protection

KOSHA supports high-risk workplaces or ones vulnerable to occupational accidents and actively responds to major OSH issues for preventing health hazards to workers.



<b>Worker's Health Centers</b> <small>(in cooperation with private institutions)</small>	We take on the role of a health services manager by systematically managing the health of workers who are socially invisible or not covered by private specialized institutions and in industrial complex with a dense concentration of small-sized enterprises.  * Currently operates 23 health centers (21 branches), and 13 trauma counselling centers for workers
<b>On-site support for prevention of suffocation accidents</b>	We strive to prevent suffocation accidents resulting in fatalities by providing technical support and prevention device services to workplaces highly vulnerable and exposed to suffocation risks.
<b>Immediate response to OSH issues</b>	We protect workers' health by responding to OSH issues in timely manner such as assessing work for which approval of contracts, improving work environment of CS center or protecting workers susceptible to weather changes.
<b>Safety measures for protecting customer service employees</b> <small>(in cooperation with private institutions)</small>	For occupations at high risk of emotional labor, we provide support to improve the safety measures of CS employees and establish an organizational prevention system.

## Safety and Health-related Financial Support

KOSHA deploys financial support to SMEs by establishing safe and pleasant work environment and protecting workers' health.



**Improvement of facilities with hazardous risk factors**  
(via Clean Workplace project)

Funds for the removal of hazards and risk factors are provided to workplaces with less than 50 full-time employees and to construction sites with a construction cost lower than about KRW 5 billion (USD 4.1 million).

- Grant for equipping occupational accident prevention items
- Rent fall prevention facilities or aid expenses to purchase the facilities
- Support accident prevention facilities for occupational accidents and job creation

**Safety Investment Innovation Initiative**





Financial support is provided to workplaces with less than 50 full-time employees for changing deteriorated hazardous machinery and improving process with high-risk of workplace fatalities.

**Loan assistance to equip occupational accident prevention facilities**

To create a better work environment, loans are provided at long-term and low interest rates to workplaces for improving their facilities to ensure safety.

## Safety and Health Education

KOSHA provides field-relevant safety and health education/training to prevent occupational accidents and fatalities, thereby improving awareness of safety and health and ensuring that safety responsibilities are fulfilled.

 <p><b>Focused education on the prevention of accidents and fatalities</b></p> <p>We run safety and health education programs, in pursuit of preventing so-called Top 4 malignant fatal accidents (fall, caught-in/between, crash, suffocation) as well as workplace fatalities of high interest to our society.</p> <ul style="list-style-type: none"> <li>• On-site patrol check</li> <li>• Prevention of caught-in/between hazardous machinery/facilities</li> <li>• Workplaces with high suffocation risks</li> <li>• Prevention of fire and explosion at construction sites</li> </ul>	 <p><b>OSH management system education</b></p> <p>As the Serious Accidents Punishment Act enforced (27 Jan. 2022), enforced, we provide OSH education on constructing safety and health management system and how to properly understand the Act for building self-regulated accident prevention system.</p> <ul style="list-style-type: none"> <li>• Safety and health management system</li> <li>• For CEOs on the Serious Accidents Punishment Act</li> <li>• Basics of the Serious Accidents Punishment Act</li> </ul>	 <p><b>Statutory/Policy-related education</b></p> <p>We provide safety and health education to ensure that those with appropriate authorities implement safety responsibilities, while the field workers are professionally educated so that the self-regulated accident prevention system can be established.</p> <ul style="list-style-type: none"> <li>• For business owners on - accident prevention rating system - risk assessment</li> <li>• For CEOs and field managers at hazardous sites</li> <li>• For safety and health managers</li> </ul>	 <p><b>Basic education</b></p> <p>We provide safety and health education tailored to different needs, including hands-on training, in-house education support, etc., to help workers and those who are more vulnerable to occupational accidents improve safety awareness.</p> <ul style="list-style-type: none"> <li>• For groups vulnerable to occupational accidents</li> <li>• For elderly and female workers</li> <li>• Hands-on safety education</li> <li>• Support for in-house education programs</li> </ul>
--	---	---	---



## Media Content Development

KOSHA develops and distributes safety and health media content tailored to each industry/occupation to enhance the quality of safety and health education and accident prevention activities.

### Media materials for accident prevention education based on business and industry/occupation characteristics

Posters, textbooks and teaching materials, stickers, and visual and auditory materials

### Safety and health ICT content highly effective in education

Informative, video-based, and CG-based Virtual Reality (VR) content

### Safety and health media materials delivery service

Deliver safety and health media materials directly to workplaces



## Safety Culture Promotion

KOSHA brings safety culture to workplaces via public relations (PR) with reflecting the current trend such as adoption of innovative business channels, campaigns, events, etc.

### Spread of safety culture

To consolidate the safety culture at workplace, we launch various safety events and campaigns. In particular, we designated the first week of July in every year as the National OSH Week, on which day we hold various people participatory events to raise safety awareness throughout society. We also provide OSH programs and consulting for self-diagnosis safety level.



### PR on accident prevention

We use broadcasting, publications, outdoor advertising, online media, and other various media to deliver safety messages to the people. We publish and share card news and info-graphics through new media, strengthening two-way communication, and expanding a consensus on safety and health practices.



## International Cooperation

We identifies and distributes outstanding safety and health information in worldwide, and contributes to the development of occupational safety and health in Korea through exchange and cooperation with international organizations and relevant agencies overseas.



### Technology collaboration network with organizations in advanced countries

- New OSH technology acquisition and information exchange enhancement
- Spread of global culture of OSH prevention

### Support to developing countries for mutual growth in OSH

- Occupational accident prevention for migrant workers
- Improvement of OSH level through the partnership with international organizations (ILO, WHO, ASEAN, etc.)
- Support to developing countries to enhance OSH level through mutual agreements

### Provision of the latest OSH information and invigoration of information exchanges

- Latest OSH knowledge and information provision for serious accident prevention
- Promotion of KOSHA and Korea's accident prevention activities across the world
- Development of a hub of OSH information through domestic/international network

### Official Development Assistance (ODA) programs

- Ability enhancement of OSH training center in Ho Chi Min City, Vietnam
- Policy consulting for the enhancement of an OSH law in Cambodia
- Ability enhancement of OSH education in Cambodia
- Take multifaceted approach to expand the business boundary for ODA programs



## Digital Strategy

KOSHA lays a foundation for the occupational accident prediction system by analyzing and utilizing BigData on occupational accident cases, and supports prevention activities by operating the IT system and improving its service quality.

### Establish OSH information management systems

#### BigData

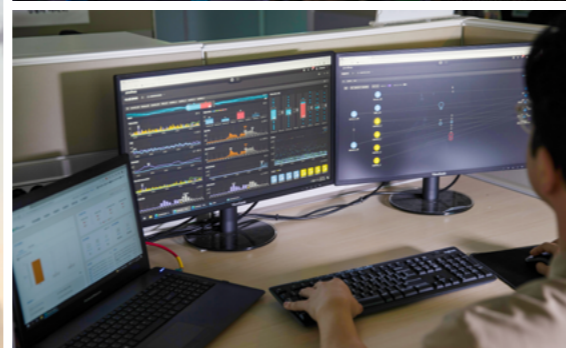
Develop scientific and technical occupational accident prevention system such as high-risk workplace prediction and smart search engine using BigData/AI technology

#### Information system operation

Operate customer-centered and stable integrated information system for accident prevention  
Lay the foundation for data-based accident prevention projects

#### Occupational accident statistics

Support the policy making on occupational accident prevention by producing and analysing the statistics on the current status of occupational accidents



## Social Responsibility Management

KOSHA utilizes our expertise in various activities to contribute to revitalizing the safety and health market and creating a more inclusive society.



### Incubation for start-ups with new safety technology

We foster start-ups with new and innovative safety and health related technologies to raise Korea's competitiveness on safety at workplaces.



### Social contribution

We conduct activities sharing our professionalism to contribute to making our society a warm place where everyone enjoys their right to be safe.



# Road to the Top

KOSHA is committed to supporting occupational accident prevention activities and enhancing the expertise of its employees by operating professional institutions across the relevant fields.

Road to the Top



## Occupational Safety and Health Research Institute (OSHRI)

The OSHRI contributes to reducing occupational accidents and improving the quality of workers' life through policy research on occupational accident prevention, practical R&D to solve safety and health issues in the industrial fields, and basic research to lay the foundation for future-oriented safety and health.



Major Areas

Safety and health policy research | Occupational safety research | Occupational health research  
Work environment research | Chemicals research

## Occupational Safety and Health Training Institute (OSHTI)

The OSHTI contributes to reducing accidents and diseases occurring at workplaces by developing educational curriculums that meet the various needs and environmental changes of workplaces, enhancing safety awareness and changing behavior of employers and employees through educational training.



Curriculums

Job training | Performance inspection training | Specialization training  
Specialized training | e-Learning | Collaboration courses

## Occupational Safety and Health Certification Institute (OSHCI)

The OSHCI ensures the manufacturing, distribution, and use of fundamentally safe products through safety certification of hazardous and dangerous machinery, apparatus, or equipment, thereby preventing occupational accidents.



Major tasks

Safety certification of hazardous machinery, apparatus, or equipment | Safety certification of protective device and equipment  
 Safety (S Mark) certification of industrial machinery, apparatus, or equipment | Safety inspection of hazardous machinery, apparatus, or equipment

## Occupational Safety and Health Future Technology Institute (OSHFI)

The OSHFI develops forward-looking safety and health projects aligned with the rapid changes in industries and expands advanced public services.



Development of future OSH infrastructure

**Electronics** Occupational cancer and acute poisoning caused by the handling of various chemicals  
 → Structuring the safety and health system tailored to the electronics industry by advancing chemical exposure monitoring technology using IoT sensors or 5G telecommunications technology

**Construction** Paradigm shift on safety and health projects according to the development of the Industry 4.0 technology  
 → Developing and adopting the smart safety technology system in construction sites (drones, intelligent CCTV, etc.)

**Services** The accelerated influx of groups vulnerable to the accidents into the service industry, driven by the advent of new labor types  
 → Building workers protecting systems in the service industry such as an information delivery system for platform workers

## KOSHA at a glance

### Established on

December 9, **1987**

### Organization

**2,219** employees

### Slogan

**안전은 권리입니다** Safety, it's your right

### Trainees

**1,595,963** trainees

### Certification and Inspection

**123,676** cases

### Private Accident Prevention Institutions evaluated by KOSHA

**1,035** institutions

### Technical Support Activities

**643,784** rounds

### Financial Support

KRW **1,035,593** million

### Organization

**Headquarters**  
**OSHRI, OSHTI, OSHCI, OSHFI**  
**6** Metropolitan Offices  
**10** Regional Offices  
**14** Area Offices

### Trainees

- CEOs: **286,786**
- Vulnerable group: **477,100**
- Employees group: **373,359**
- Job/specialization : **14,270**
- e-Learning : **444,448**

### Certification and Inspection

- Safety certification of
  - hazardous machinery, apparatus, or equipment: **55,303** cases
  - protective devices and equipments: **6,692** cases
  - industrial machinery, apparatus, or equipment: **1,114** cases
- Safety inspection of hazardous machinery, apparatus, or equipment: **60,567** cases

(As of 1Q of 2022)

**2,219** employees

**1,595,963** trainees

**123,676** cases



All of us at KOSHA respect and comply with our responsibilities and duties for safety and health activities, and continuously communicate and cooperate with various stakeholders.

### Private Accident Prevention Institutions evaluated by KOSHA

- Education: **249** institutions
- Safety: **194** institutions
- Health: **451** institutions
- Construction: **141** institutions

### Technical Support Activities

- Workplace fatalities reduction: **89,929** rounds
  - On-site patrol inspection: **73,755** rounds
- Statutory/Policy-related projects: **111,627** rounds
  - ※ We simply added the number of projects/locations/times/ persons, as they are managed separately based on goal assignment.
- Private sector projects: **442,228** rounds

### Financial Support

- Financial aid for Clean Workplace project: KRW **399,900** million
- Loans for accident prevention facilities: KRW **319,051** million
- Work environment monitoring & special health examination: KRW **44,114** million
- Safety Investment Innovation Initiative: KRW **272,528** million

**1,035** institutions

**643,784** rounds

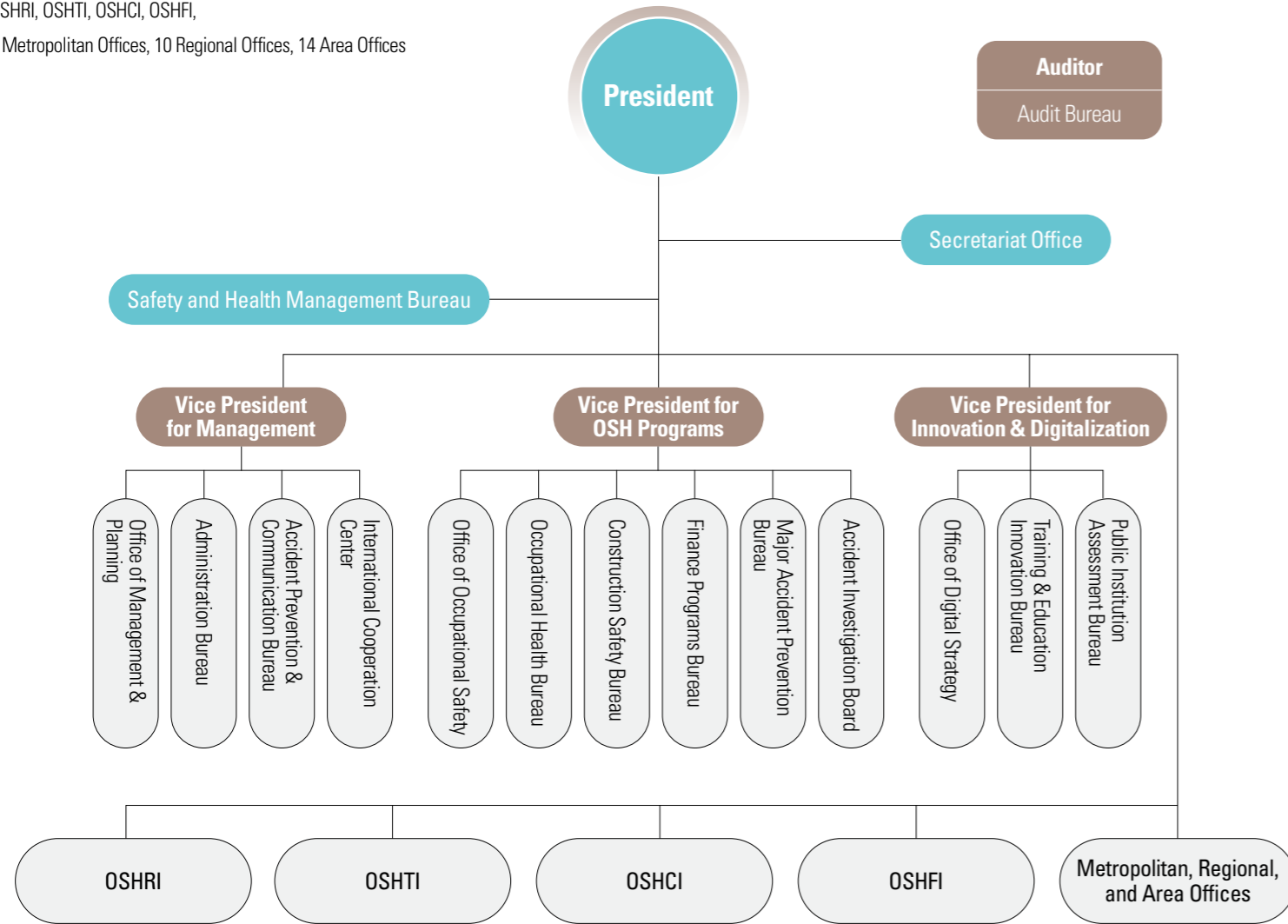
KRW **1,035,593** million (Appr. USD 810 million)

(As of Dec. 2021)

# Organizational Chart

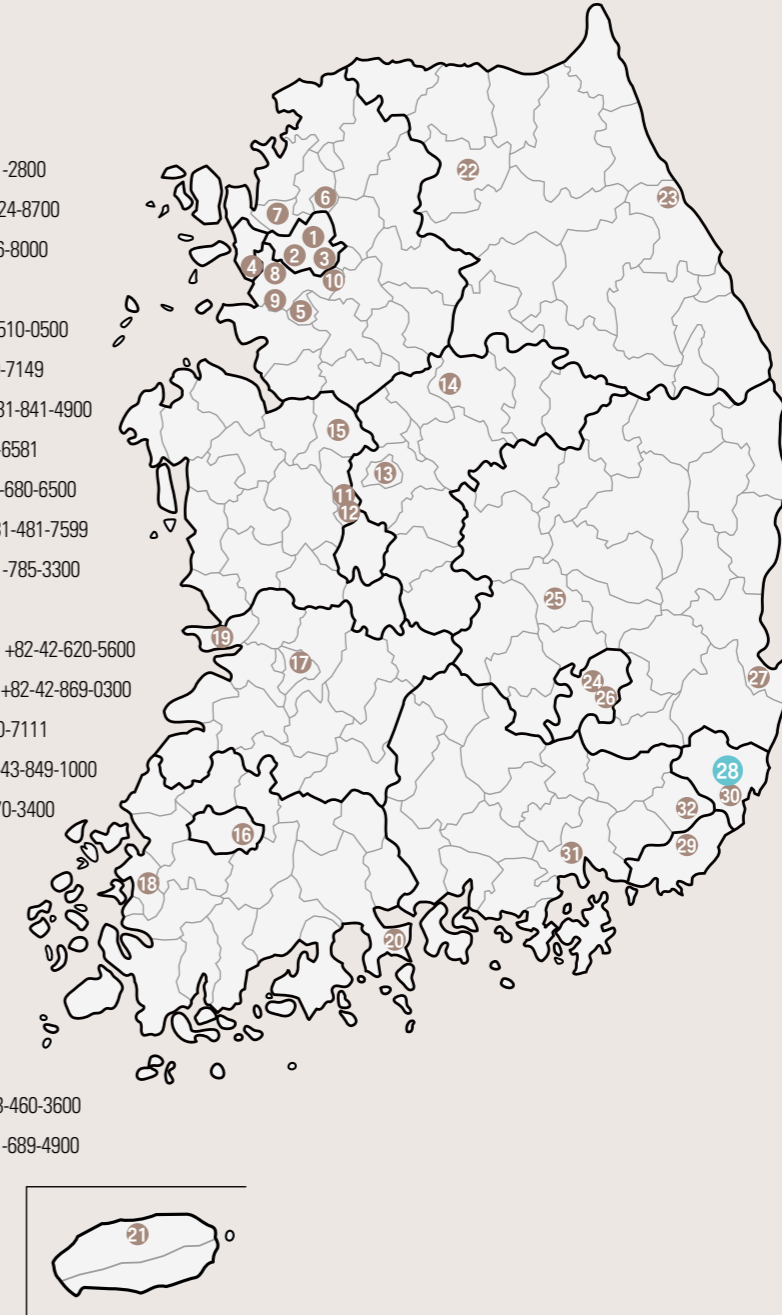
**Headquarters** (3 Vice Presidents, 3 Offices, 10 Bureaus, 1 Board, 1 Center)

OSHRI, OSHTI, OSHCI, OSHFI,  
6 Metropolitan Offices, 10 Regional Offices, 14 Area Offices



# KOSHA Networks

- 1 Seoul Metropolitan Office +82-2-6711-2800
- 2 Southern Seoul Area Office +82-2-6924-8700
- 3 Eastern Seoul Area Office +82-2-2086-8000
- 4 Incheon Metropolitan Office +82-32-510-0500
- 5 Gyeonggi Regional Office +82-31-259-7149
- 6 Northern Gyeonggi Area Office +82-31-841-4900
- 7 Goyang/Paju Area Office +82-31-995-6581
- 8 Central Gyeonggi Area Office +82-32-680-6500
- 9 Western Gyeonggi Area Office +82-31-481-7599
- 10 Eastern Gyeonggi Area Office +82-31-785-3300
- 11 Daejeon-Sejong Metropolitan Office +82-42-620-5600
- 12 OSHRI Chemicals Research Bureau +82-42-869-0300
- 13 Chungbuk Regional Office +82-43-230-7111
- 14 Northern Chungbuk Area Office +82-43-849-1000
- 15 Chungnam Regional Office +82-41-570-3400
- 16 Gwangju Metropolitan Office +82-62-949-8700
- 17 Jeonbuk Regional Office +82-63-240-8500
- 18 Jeonnam Regional Office +82-61-288-8700
- 19 Western Jeonbuk Area Office +82-63-460-3600
- 20 Eastern Jeonnam Area Office +82-61-689-4900
- 21 Jeju Regional Office +82-64-797-7500



- 22 Gangwon Regional Office +82-33-815-1004
- 23 Eastern Gangwon Area Office +82-33-820-2580
- 24 Daegu Metropolitan Office +82-53-609-0500
- 25 Gyeongbuk Regional Office +82-54-478-8000
- 26 Western Daegu Area Office +82-53-650-6810
- 27 Eastern Gyeongbuk Area Office +82-54-271-2013
- 28 **KOSHA Headquarters** +82-1644-4544
- 28 Occupational Safety and Health Research Institute (OSHRI) +82-1644-4544
- 28 Occupational Safety and Health Training Institute (OSHTI) +82-1644-5656
- 28 Occupational Safety and Health Certification Institute (OSHCI) +82-1644-4544
- 28 Occupational Safety and Health Future Technology Institute (OSHFI) +82-1644-4544
- 29 Busan Metropolitan Office +82-51-520-0510
- 30 Ulsan Regional Office +82-52-226-0510
- 31 Gyeongnam Regional Office +82-55-269-0510
- 32 Eastern Gyeongnam Area Office +82-55-371-7500